

# 2018 KS2 School Dashboard for governors & school leaders

Produce custom dashboards at  
[www.fftaspire.org](http://www.fftaspire.org)

## Smithy Bridge Foundation Primary School

LA Rochdale DFE 3545201 Produced September 2018 Version 1

### What it is

Seven easy-to-use reports which help governors and school leaders to evaluate school performance using the latest 2017 DfE school performance indicators.

### What it tells you

- What are the strengths and areas for improvement in your school?
- How does attainment and pupil progress compare to the national average?
- How are you performing in different subjects?
- Do you have any under-performing groups of pupils?
- How might the context of your school affect performance?
- How does pupil attendance compare to the national average?

### About the data shown

1 2 3

#### Actual results

Actual results for your school, using a range of measures such as averages and thresholds.



#### Gauges

These display headline indicators and whether actual results and pupils' progress are in line with, or significantly above or below, the national average.

ESTIMATED



1 2 3

#### Pupil progress

The value added progress that your pupils have made from one key stage to the next. FFT compares your actual results to the estimated results based on the progress of similar pupils nationally.



#### Statistical significance

Green plus signs and red minus signs highlight where either actual results or pupils' progress is significantly above or below the national average.



#### Trends

The dashboard analyses school performance over 3-5 years. Any significant year-on-year improvement is highlighted using an up arrow. Significant declines in performance are highlighted with a down arrow.



#### Strengths & weaknesses

These highlight key pupil groups and subjects where progress is above or below the national average.

### Working in partnership with



### Data sources

Generated from FFT Aspire which includes data sourced from the DfE (National Pupil Database) and data calculated by FFT. FFT is accredited as a DfE supplier to receive early access to ASP data. Headline performance indicators will be consistent with the DfE School Performance Tables and ASP.

# Overview

## KS2 Attainment 2018 · Actual results

55 pupils

## KS2 Progress 2018 · Value Added

55 matched pupils

Average Scaled Score (Re, Ma)

% Expected standard+ (Re, Wr, Ma)

Average Scaled Score (Re, Ma)

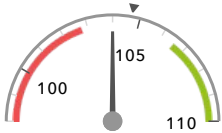
% Expected standard+ (Re, Wr, Ma)

104.0

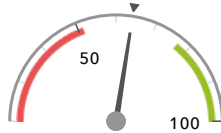
64%

-1.0

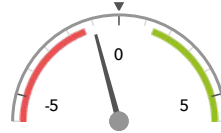
-4%



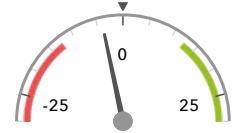
In line with the national average (104.7) ◀



In line with the national average (64%) ◀



In line with the national average (0) ◀



In line with the national average (0%) ◀

## KS2 higher and lower performing pupil groups 2018

	Higher performing	Lower performing
Overall achievement pupil progress		SEN Support (6) ⬇ FSM (ever) (11) FSM (in last 6 years) (11)
KS2 reading achievement pupil progress	Autumn Term (15) Higher attainers (19) No SEN (47) ↓	SEN Support (6) Lower attainers (17) FSM (ever) (11)
KS2 writing achievement pupil progress	Spring Term (19) Higher attainers (19) Autumn Term (15)	SEN Support (6) Summer Term (21) Middle attainers (19)
KS2 mathematics achievement pupil progress		SEN Support (6) ⬇ Spring Term (19) ⬇ ↓ FSM (ever) (11)
KS2 grammar, punctuation & spelling achievement pupil progress		SEN Support (6) ⬇ FSM (ever) (11) ⬇ FSM (in last 6 years) (11) ⬇

# Smithy Bridge Foundation Primary School

2018 KS2 VA

## Attainment & progress

### KS2 Attainment 2018

55 pupils

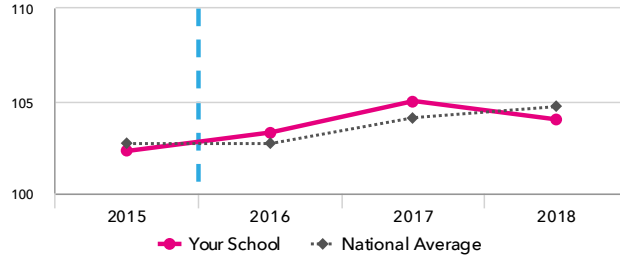
Average Scaled Score (Re, Ma)

104.0

FFT Rank



In line with the national average (104.7)



### KS2 Progress 2018

55 matched pupils

Average Scaled Score (Re, Ma)

-1.0

FFT Rank



In line with the national average (0)

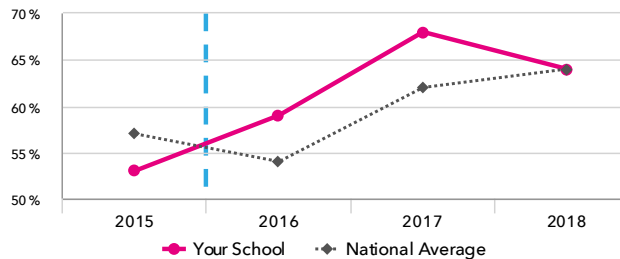
% Expected standard+ (Re, Wr, Ma)

64%

FFT Rank



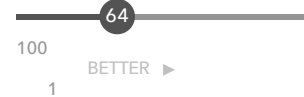
In line with the national average (64%)



% Expected standard+ (Re, Wr, Ma)

-4%

FFT Rank



In line with the national average (0%)

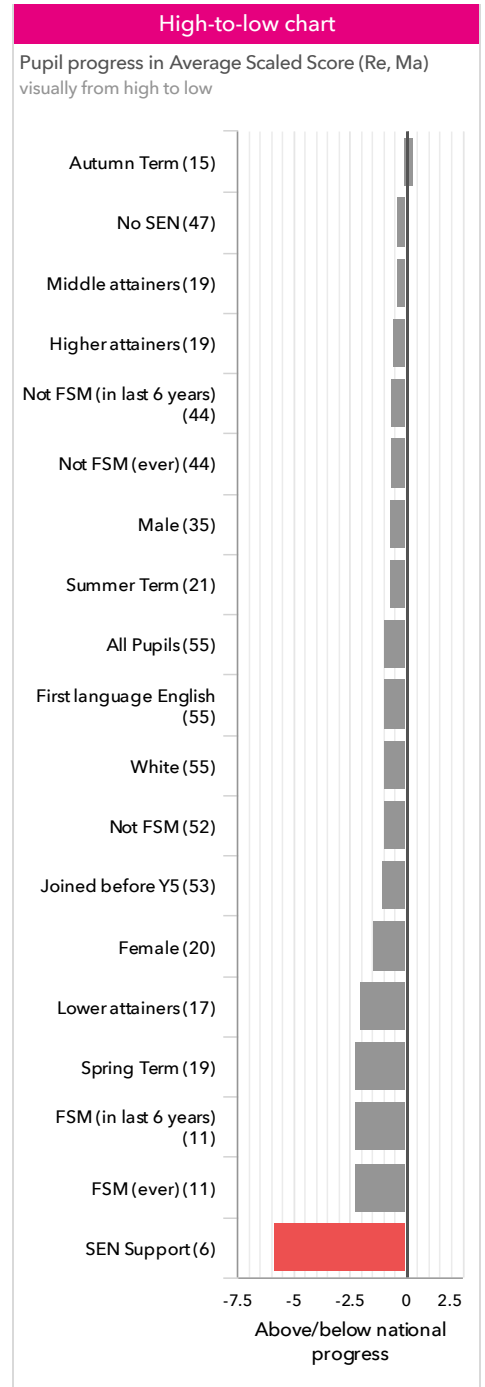
### KS2 performance summary

	Actual results			Pupil progress		
	2016	2017	2018	2016	2017	2018
Number of Pupils / % Matched	56	57	55	100%	100%	100%
% Expected standard+ (Re, Wr, Ma)	59%	68%	64%	-1%	+10%	-4%
% Higher standard (Re, Wr, Ma)	9%	4%	11%	+3%	-4%	+2%
Average Scaled Score (Re, GPS, Ma)	103.6	104.6	103.8	-1.1	-0.3	-1.5
Average Scaled Score (Re, Ma)	103.3	105.0	104.0	-1.2	+0.3	-1.0
% Expected standard+ Reading	75%	81%	84%	+2%	+12%	+5%
% Higher standard Reading	20%	35%	27%	-2%	+12%	-2%
Scaled Score Reading	103.4	106.6	104.9	-0.8	+1.9	-0.3
% Expected standard+ Writing	93%	84%	82%	+13%	+11%	+1%
% Higher standard Writing	38%	11%	24%	+20%	-6%	+3%
Scaled Score Writing	105.3	100.7	103.2	+3.2	+0.1	+0.7
% Expected standard+ Maths	63%	74%	71%	-13%	+1%	-8%
% Higher standard Maths	16%	18%	20%	-5%	-3%	-5%
Scaled Score Maths	103.4	103.4	103.5	-1.6	-1.3	-1.6
% Expected standard+ Grammar, Punctuation & Spelling	82%	72%	76%	+3%	-2%	-4%
% Higher standard Grammar, Punctuation & Spelling	21%	25%	20%	-6%	-5%	-18%
Scaled Score Grammar, Punctuation & Spelling	104.6	105.1	103.8	-0.7	-0.7	-2.5
% Expected standard+ Science	93%	91%	84%	-	-	-
Average Point Score (Re, Wr, Ma)	-	-	-	-	-	-
% Level 4+ (Re, Wr, Ma)	-	-	-	-	-	-
% Level 4B+ (Re, Wr, Ma)	-	-	-	-	-	-
% Level 5+ (Re, Wr, Ma)	-	-	-	-	-	-

# Pupil groups

## KS2 Pupil groups performance 2018

		Pupils	Actual results			Pupil progress		
			Average Scaled Score (Re, Ma)	% Expected standard + (Re, Wr, Ma)	% Higher standard (Re, Wr, Ma)	Average Scaled Score (Re, Ma)	% Expected standard + (Re, Wr, Ma)	% Higher standard (Re, Wr, Ma)
Summary	<a href="#">All Pupils &gt;</a>	55	104.0	64%	11%	-1.0	-4%	+2%
Gender	<a href="#">Male &gt;</a>	35	104.3	60%	11%	-0.7 ↓	-7%	+2%
	<a href="#">Female &gt;</a>	20	103.6	70%	10%	-1.4	+2%	+0%
Prior Attainment	<a href="#">Higher attainers &gt;</a>	19	109.7	100%	26%	-0.6	+5%	+3%
	<a href="#">Middle attainers &gt;</a>	19	104.9	68%	5%	-0.4	-6%	+3%
	<a href="#">Lower attainers &gt;</a>	17	96.7	18%	0%	-2.0	-11%	-0%
Pupil Premium	<a href="#">FSM (in last 6 years) &gt;</a>	11	101.4	55%	9%	-2.3	-8%	+5%
	<a href="#">Not FSM (in last 6 years) &gt;</a>	44	104.7	66%	11%	-0.6 ↓	-3%	+1%
FSM	<a href="#">FSM &gt;</a>	3	106.8	100%	33%	-0.5	+15%	+23%
	<a href="#">Not FSM &gt;</a>	52	103.9	62%	10%	-1.0 ↓	-5%	+1%
FSM Ever	<a href="#">FSM (ever) &gt;</a>	11	101.4	55%	9%	-2.3	-8%	+5%
	<a href="#">Not FSM (ever) &gt;</a>	44	104.7	66%	11%	-0.6 ↓	-3%	+1%
Term of Birth	<a href="#">Autumn Term &gt;</a>	15	106.2	73%	20%	+0.3	+0%	+13%
	<a href="#">Spring Term &gt;</a>	19	102.6	58%	11%	-2.2 ↓	-10%	+1%
	<a href="#">Summer Term &gt;</a>	21	103.9	62%	5%	-0.7	-1%	-5%
SEN Group	<a href="#">SEN Support &gt;</a>	6	91.6	0%	0%	-5.8 🚫	-25%	-0%
	<a href="#">EHC Plan &gt;</a>	2	95.5	0%	0%	-0.8	-14%	-0%
	<a href="#">No SEN &gt;</a>	47	106.0	74%	13%	-0.3	-1%	+2%
EAL	<a href="#">First language English &gt;</a>	55	104.0	64%	11%	-1.0	-4%	+2%
Mobility	<a href="#">Joined in Y5 or Y6 &gt;</a>	2	101.0	50%	0%	+0.6	+7%	-1%
	<a href="#">Joined before Y5 &gt;</a>	53	104.2	64%	11%	-1.0	-4%	+2%
Ethnicity	<a href="#">White &gt;</a>	55	104.0	64%	11%	-1.0	-4%	+2%



# Subjects

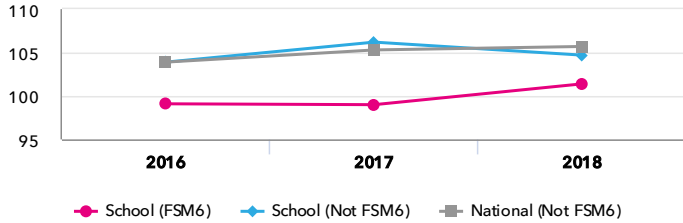
## KS2 subject performance 2018

	Actual results			Pupil progress			Actual results over time		
	2016	2017	2018	2016	2017	2018			
Number of Pupils / % Matched	56	57	55	100%	100%	100%			
<b>Reading</b>									
% Expected standard+	75%	81%	84%	+2%	+12%	+5%			
% Higher standard	20%	35%	27%	-2%	+12%	-2%			
Scaled Score	103	107	105	-0.8	+1.9	-0.3			
Level 4+	-	-	-	-	-	-			
Level 4B+	-	-	-	-	-	-			
Level 5+	-	-	-	-	-	-			
Average Point Score	-	-	-	-	-	-			
<b>Writing</b>									
% Expected standard+	93%	84%	82%	+13%	+11%	+1%			
% Higher standard	38%	11%	24%	+20%	-6%	+3%			
Scaled Score	105	101	103	+3.2	+0.1	+0.7			
Level 4+	-	-	-	-	-	-			
Level 5+	-	-	-	-	-	-			
Average Point Score	-	-	-	-	-	-			
<b>Maths</b>									
% Expected standard+	63%	74%	71%	-13%	+1%	-8%			
% Higher standard	16%	18%	20%	-5%	-3%	-5%			
Scaled Score	103	103	104	-1.6	-1.3	-1.6			
Level 4+	-	-	-	-	-	-			
Level 4B+	-	-	-	-	-	-			
Level 5+	-	-	-	-	-	-			
Average Point Score	-	-	-	-	-	-			
<b>Grammar, Punctuation &amp; Spelling</b>									
% Expected standard+	82%	72%	76%	+3%	-2%	-4%			
% Higher standard	21%	25%	20%	-6%	-5%	-18%			
Scaled Score	105	105	104	-0.7	-0.7	-2.5			
<b>Science</b>									
% Expected standard+	93%	91%	84%	-	-	-			
Level 4+	-	-	-	-	-	-			
Level 5+	-	-	-	-	-	-			
Average Point Score	-	-	-	-	-	-			

# Disadvantaged pupils

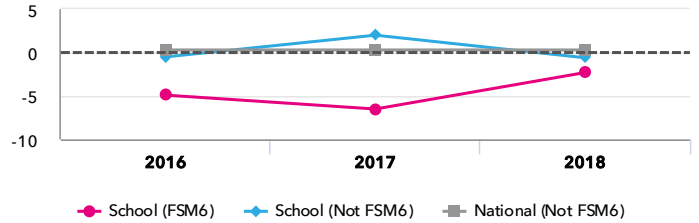
## KS2 attainment for disadvantaged pupils 2018

Average Scaled Score (Re, Ma)



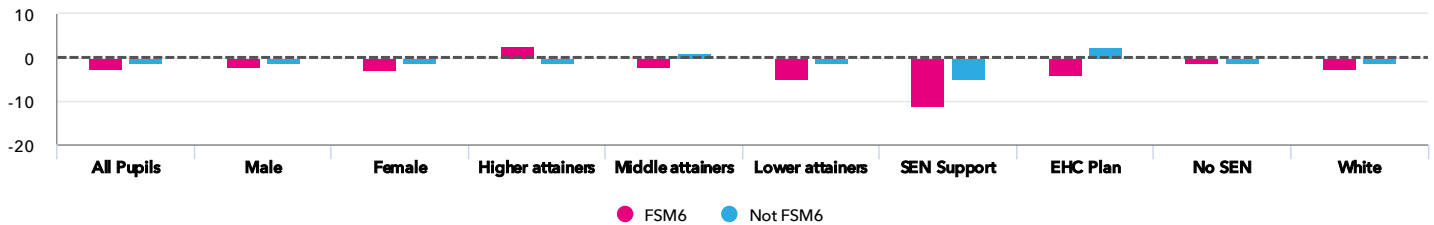
## KS2 progress for disadvantaged pupils 2018

Average Scaled Score (Re, Ma)



## Progress gap

Average Scaled Score (Re, Ma)

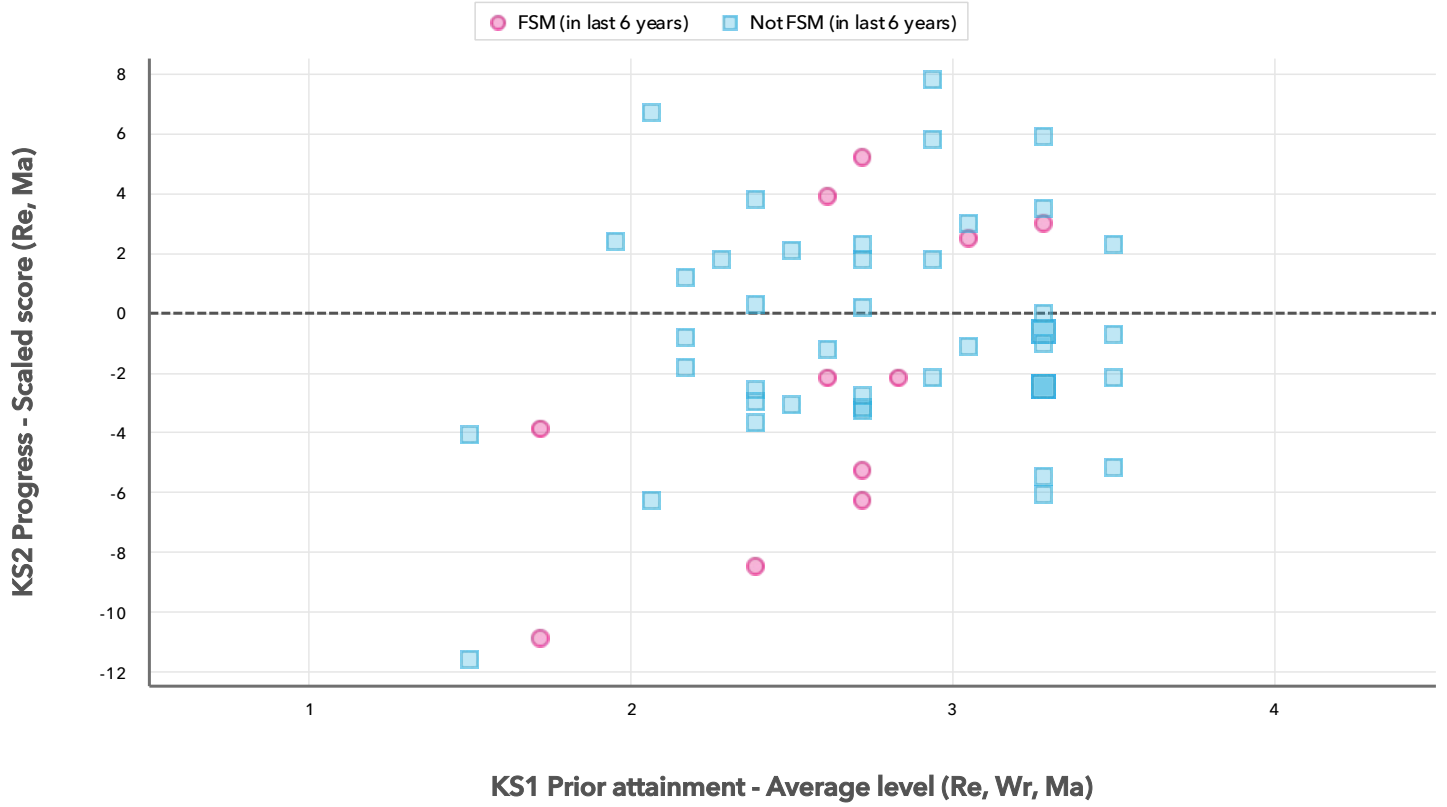


## Attainment & progress

Pupils				Attainment			Progress		
				Average Scaled Score (Re, Ma)			Average Scaled Score (Re, Ma)		
	FSM6	Not FSM6	FSM6	Not FSM6	Gap	FSM6	Not FSM6	Gap	
Summary	All Pupils	11	44	101.4	104.7	-3.3	-2.3	-0.6 ↓	-1.7
Gender	Male	7	28	103.4	104.5	-1.1	-2	-0.3	-1.7
	Female	4	16	98	105	-7	-2.7	-1.1	-1.6
Prior Attainment	Higher attainers	2	17	112	109.4	2.6	2.7	-0.9	3.6
	Middle attainers	5	14	103.6	105.4	-1.8	-2.2	0.3	-2.5
	Lower attainers	4	13	93.4	97.8	-4.4	-4.9	-1.2	-3.7
SEN Group	SEN Support	1	5	84	93.1	-9.1	-10.9	-4.8	-6.1
	EHC Plan	1	1	91	100	-9	-3.9	2.4	-6.3
	No SEN	9	38	104.5	106.3	-1.8	-1.1	-0.2	-0.9
Ethnic Group	White	11	44	101.4	104.7	-3.3	-2.3	-0.6	-1.7

# Scatterplot

KS2 Pupil scatterplot 2018 55 pupils highlighted by Pupil Premium



## Smithy Bridge Foundation Primary School

2018 KS2

## Context

## Context · Year 6 · 2017 / 2018

		Pupils	Proportion	
			School	National
Summary	All Pupils	55	100%	100%
Gender	Male	35	64%	51%
	Female	20	36%	49%
Prior Attainment	Higher attainers	19	35%	31%
	Middle attainers	19	35%	35%
	Lower attainers	17	31%	29%
Pupil Premium	FSM (in last 6 years)	11	20%	30%
	Not FSM (in last 6 years)	44	80%	69%
FSM	FSM	3	5%	15%
	Not FSM	52	95%	85%
FSM Ever	FSM (ever)	11	20%	31%
	Not FSM (ever)	44	80%	69%
Term of Birth	Autumn Term	15	27%	33%
	Spring Term	19	35%	32%
	Summer Term	21	38%	35%
SEN Group	SEN Support	6	11%	15%
	EHC Plan	2	4%	3%
	No SEN	47	85%	82%
EAL	First language English	55	100%	80%
Mobility	Joined in Y5 or Y6	2	4%	7%
	Joined before Y5	53	96%	93%
Ethnicity	White	55	100%	74%

## Absence · Year 6 · 2017 / 2018

		Pupils	Absence		Persistent absentees	
			School	National	School	National
Summary	All Pupils	55	4%	4%	5%	5%
Gender	Male	35	5%	4%	6%	6%
	Female	20	4%	4%	5%	5%
Prior Attainment	Higher attainers	19	4%	3%	0%	2%
	Middle attainers	19	5%	4%	5%	4%
	Lower attainers	17	4%	5%	12%	10%
Pupil Premium	FSM (in last 6 years)	11	7%	5%	18%	12%
	Not FSM (in last 6 years)	44	4%	3%	2%	3%
FSM	FSM	3	9%	6%	33%	16%
	Not FSM	52	4%	4%	4%	4%
FSM Ever	FSM (ever)	11	7%	5%	18%	11%
	Not FSM (ever)	44	4%	3%	2%	3%
Term of Birth	Autumn Term	15	4%	4%	0%	6%
	Spring Term	19	4%	4%	5%	6%
	Summer Term	21	5%	4%	10%	5%
SEN Group	SEN Support	6	6%	5%	33%	10%
	EHC Plan	2	2%	7%	0%	20%
	No SEN	47	4%	4%	2%	4%
EAL	First language English	55	4%	4%	5%	6%
Mobility	Joined in Y5 or Y6	2	4%	6%	0%	15%
	Joined before Y5	53	4%	4%	6%	5%
Ethnicity	White	55	4%	4%	5%	6%